



ACUDOR

In the U.S.A. :

In Canada :

Outside North America :

www.acudor.com

www.acudor.ca

www.acudorintl.com

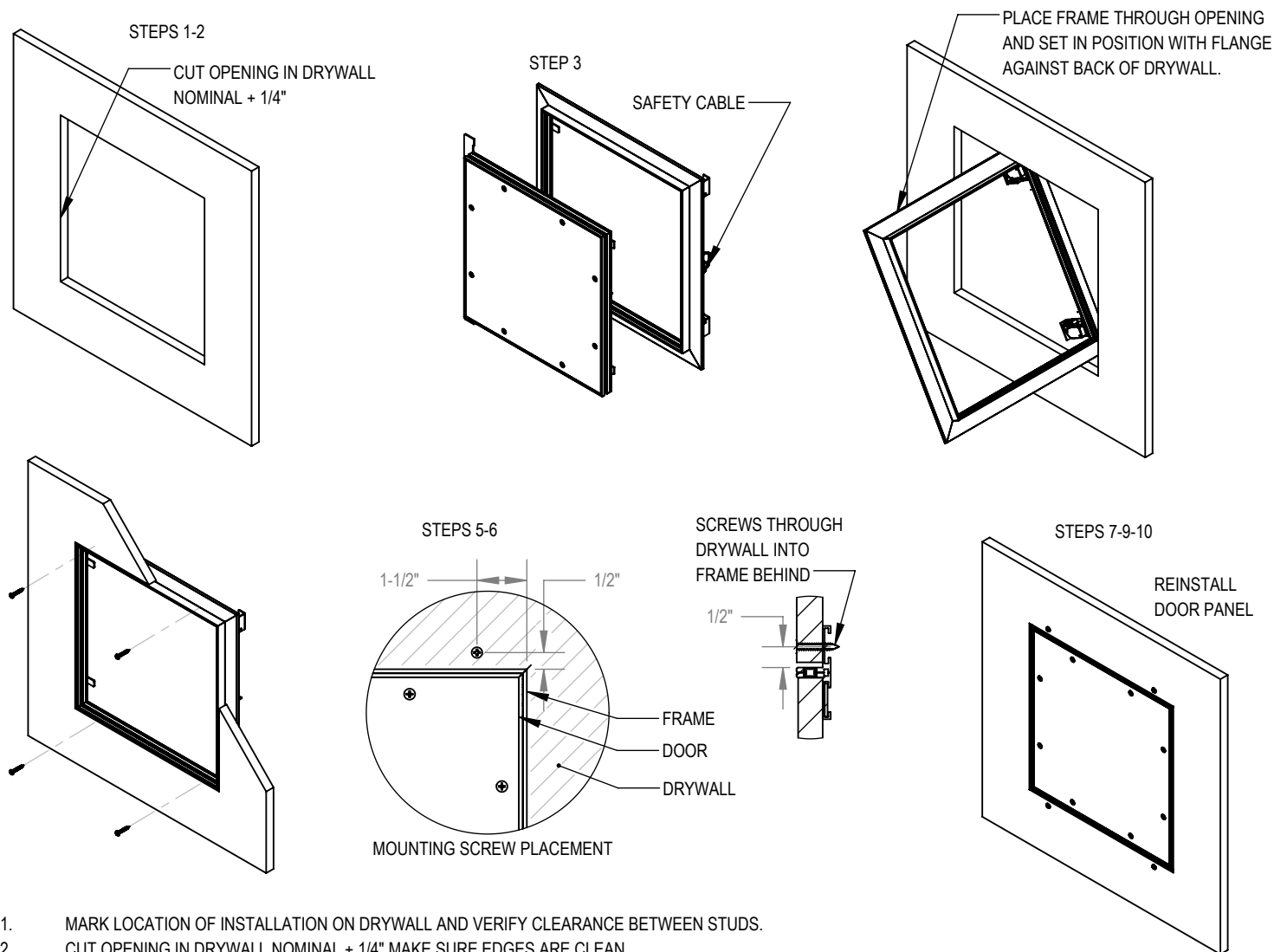
800 722-0510

888 388-3611

905 428-2240

DW-5058

INSTALLATION



1. MARK LOCATION OF INSTALLATION ON DRYWALL AND VERIFY CLEARANCE BETWEEN STUDS.
2. CUT OPENING IN DRYWALL NOMINAL + 1/4" MAKE SURE EDGES ARE CLEAN.
3. UNLOCK DOOR, DISENGAGE SAFETY CABLE AND REMOVE DOOR.
4. PLACE THE FRAME THROUGH THE OPENING AND SET IN POSITION WITH FLANGE AGAINST BACK OF DRYWALL.
5. USE #6-20 X 1 BUGLE HEAD PHILLIPS RECESSED SELF DRILLING DRYWALL SCREWS.
6. CENTER THE FRAME IN OPENING, CHECK LEVEL, SQUARE AND DRIVE SCREWS THROUGH DRYWALL INTO THE FRAME BEHIND. STAY 1-1/2" AWAY FROM CORNERS AND MAINTAIN 4" MAXIMUM DISTANCE BETWEEN SCREWS.
7. INSTALL DOOR PANEL INTO FRAME AND CHECK IF DOOR OPENS AND CLOSSES PROPERLY, IF NOT REPEAT STEP 6.
8. REMOVE DOOR PANEL. APPLY DRYWALL COMPOUND TO DOOR AND AROUND FRAME, SAND SMOOTH TO FINISH WHEN DRY.
9. CLEAN UP EXCESS COMPOUND AROUND INSIDE OF FRAME AND OUTSIDE EDGES OF DOOR PANEL.
10. REINSTALL DOOR PANEL INTO FRAME AND ENGAGE SAFETY CABLE PUSH DOOR CLOSED.

NOTE: UNLESS OTHERWISE SPECIFIED
DOOR IS CONFIGURED FOR 5/8" DRYWALL

